

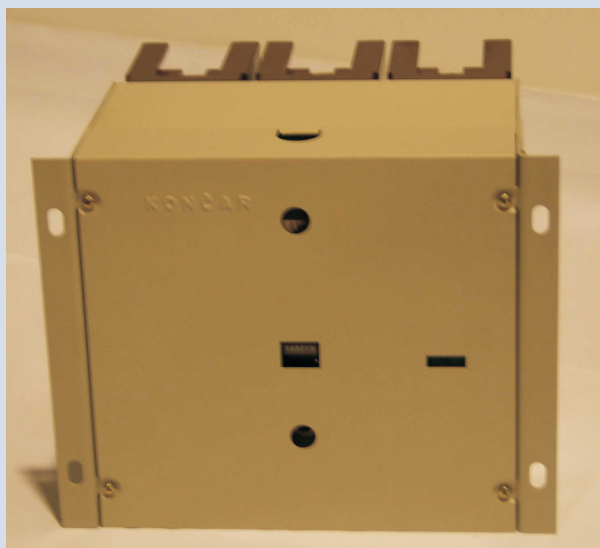
## VAKUUMSKI SKLOPNIK

### Serije VS

Sklopnik je mehanički sklopni aparat koji ima samo jedan položaj mirovanja, koji se ne upravlja ručno i koji može uklapati, provoditi i prekidati struju normalnim pogonskim uvjetima, uključivši ili preopterećenje. Kod sklopnika sa elektromagnetskim pogonom sile za otvaranje i zatvaranje glavnih kontakata ostvaruju se elektromagnetom.

Vakuumski sklopnik pogodan je za sklapanje trofaznih elektromotora, transformatora, kondenzatorskih baterija i dr.

Vakuumski sklopnik serije VS dizajniran je, proizveden i ispitan u skladu s IEC 62271-106.



**Kompaktnost**  
**Pouzdanost**  
**Ekološka podobnost**  
**Jednostavnost**

## VACUUM CONTACTOR

### Series VS

Contactor is mechanical switching device having only one position of rest, operated otherwise than by hand, capable of making, carrying and breaking currents under normal circuit conditions including operating overload conditions. Electromagnetic contactor is a contactor in which the force for closing or opening the main contacts is provided by an electro-magnet.

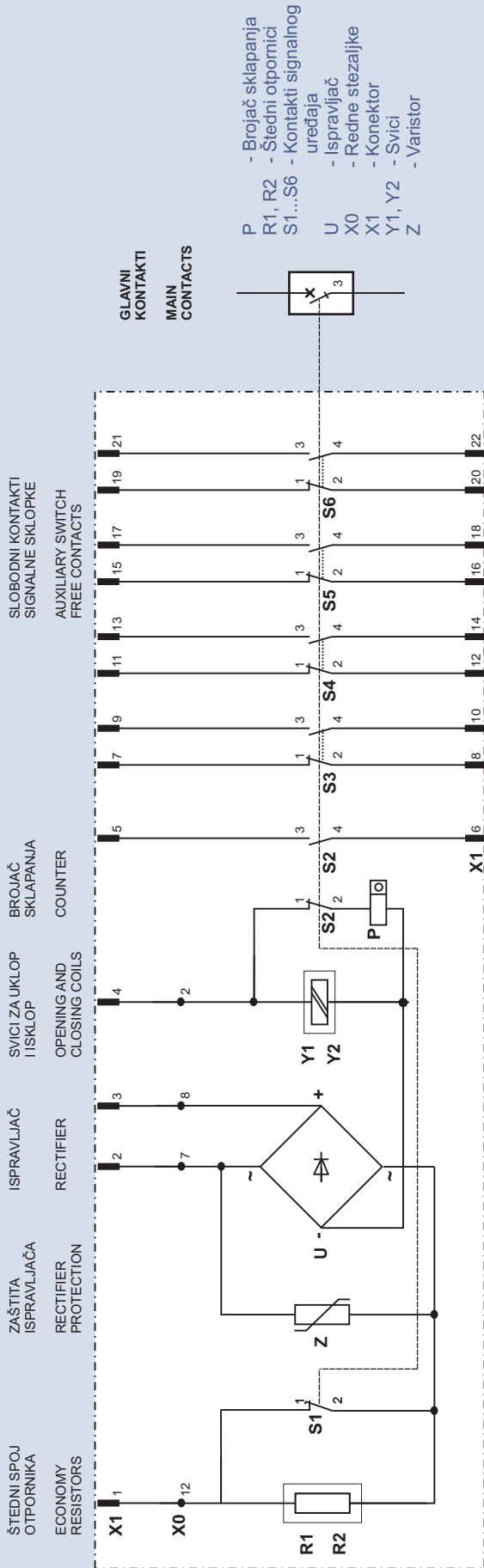
Vacuum contactor is suitable for switching of three-phase devices such as electric slip-ring and squirrel-cage motors, transformers and capacitor banks.

Vacuum contactor series VS is designed, manufactured and tested in accordance with IEC 62271-106.

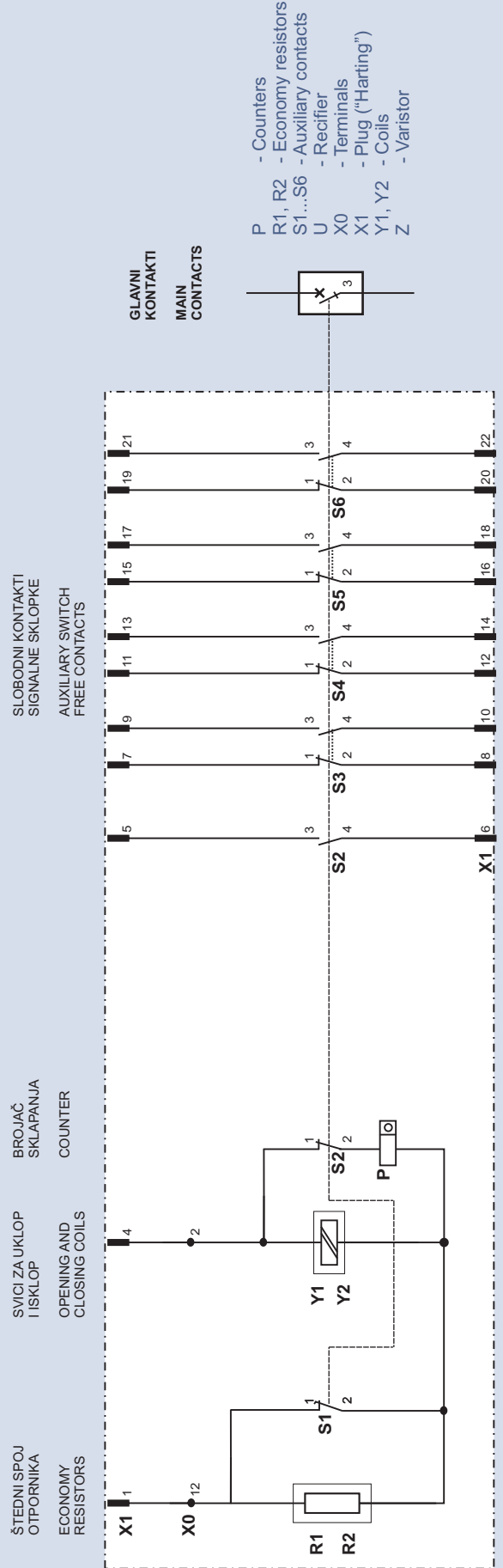


**Compactness**  
**Reliability**  
**Environmental compatibility**  
**Simplicity**

A) Izmjenični napon upravljanja (110 ili 220V/50 Hz) A) AC supply voltage for auxiliary circuits (110 V/50Hz or 220V/50 Hz)

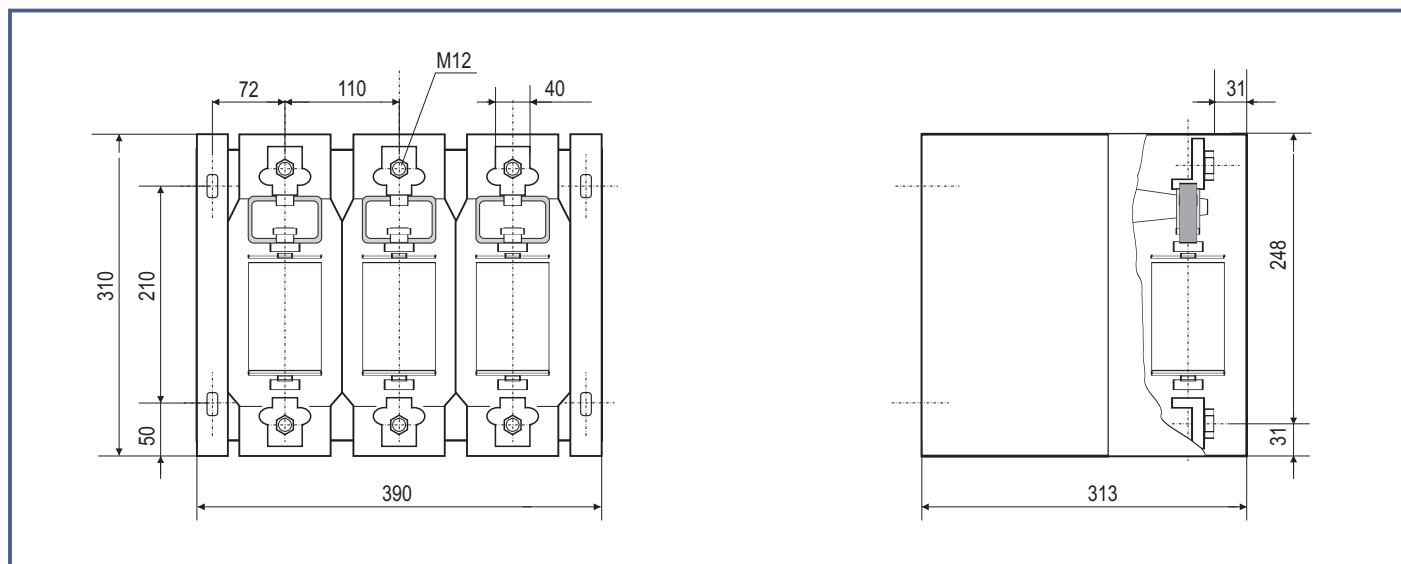


B) Istosmjerni napon upravljanja (110 V= ili 220 V=) B) DC supply voltage for auxiliary circuits (110 V= or 220 V=)



## MJERNA SKICA

## DIMENSIONAL DRAWING



## TEHNIČKE KARAKTERISTIKE

## TECHNICAL CHARACTERISTICS

Nazivni napon	Rated voltage	kV	7,2
Nazivni pogonski napon	Rated operational voltage	kV	6,6
Podnosivi udarni napon	Rated impuls withstand voltage	kV	60
Nazivna frekvencija	Rated frequency	Hz	50; 60
Nazivna struja	Rated current	A	450
Nazivna kratkotrajna struja 1s.	Rated short time current 1 sec.	A	8800
Podnosiva kratkotrajna struja 0,1s.	Short time withstand current 0,1 s RMS	kA	16
Podnosiva vršna vrijednost struje 0,01s.	Peak withstand current 0,01 s	kA	65
Nazivna uklopna moć (AC4)	Rated breaking capacity; cosφ=0,35 (AC4)	A	3600
Nazivna prekidna moć, cosφ=0,35 (AC4)	Rated making capacity (AC4)	A	4500
Maksimalna prekidna moć	Maximal breaking capacity	A	6300
Učestalost sklapanja	Switching frequency	Sklapanja/sat - cycles per hour	1200
Električna trajnost	Electrical life	sklapanja - cycles	25 x 10 <sup>4</sup>
Mehanička trajnost	Mechanical life	sklapanja - cycles	2 x 10 <sup>6</sup>
Snaga svitka pri uklopu	Pick-up power	W	250
Snaga svitka u trajnom radu	Holding power	W	60
Masa	Weight	kg	30

## PODACI ZA NARUĐBU

VS 7,2-400  (Navedi broj komada!)

Nazivni napon upravljanja (zaokružiti):

110V=  220V=  110V/50Hz  220V/50Hz

Konektor (na poseban zahtjev): ..... mm

### NAPOMENA:

Svi podaci navedeni u ovom katalogu informacijskog su karaktera.  
Proizvođač pridržava pravo izmjene.  
Obvezujuće podatke i mjerne skice dajemo na zahtjev.

## ORDERING INFORMATION

VS 7,2-400  (Please, indicate quantity!)

Supply voltage for control circuits (please round):

110V=  220V=  110V/50Hz  220V/50Hz

Plug and socket set (on special request only): ..... mm

### NOTICE:

Technical characteristics, dimensional drawings and other relevant data are subject to change.

Obligatory data only on request.

